

PROGRAM/CLASS OPTIONS

A non-refundable registration fee, equivalent to one month's tuition, is due at the time of registration.

15 months and walking-23 months

2 days: Monday/Wednesday

2 days: Tuesday/Thursday

\$155/month

2 Year Olds

(Must be 2 by September 1, 2026)

4 days: Monday-Thursday - \$220/month

2 days: Monday/Wednesday - \$155/month

2 days: Tuesday/Thursday - \$155/month

3 Year Olds

(Must be 3 by September 1, 2026)

4 days: Monday-Thursday - \$220/month

3 days: Tuesday-Thursday - \$190/month

\$50 Abeka curriculum fee

4 Year Olds

(Must be 4 by September 1, 2026)

4 days: Monday-Thursday - \$220/month

\$75 Abeka curriculum fee

Kindergarten

(Must be 5 by September 1, 2026)

4 days: Monday-Thursday - \$235/month

\$160 Abeka curriculum fee

Parent/Child Meet and Greet

Thursday, August 27, 2026

(Teachers will contact parents in mid-August)

Classes begin Tuesday, September 8, 2026

CAR LINE DROP OFF & PICK UP

To make it easier for our parents, we run car line in the morning and afternoon. No getting out of the car and bringing your child in!



SPECIAL ACTIVITIES

We host numerous special activities throughout the year. Among them are:

Parent/Child Meet & Greet

Grand Day

Team Spirit Day

Thanksgiving Feast

Comfy Cozy Day

Pastries with Parents

K4 & Kindergarten Graduation Ceremonies



2026-2027 PROGRAM INFORMATION

3917 Washington Road
Martinez, GA 30907

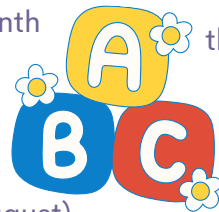
Phone: 706-860-4812

Deborah Steele, Director

dsteele@myabilene.org

Pam Swann, Assistant Director

pswann@myabilene.org



PURPOSE

Our purpose is to provide education and development to your child's greatest potential - spiritually, mentally, physically and emotionally. This is accomplished by providing learning and developmental experiences consistent with the Christian principles of Abilene Baptist Church which are based on the authority of the Bible.



SECURITY

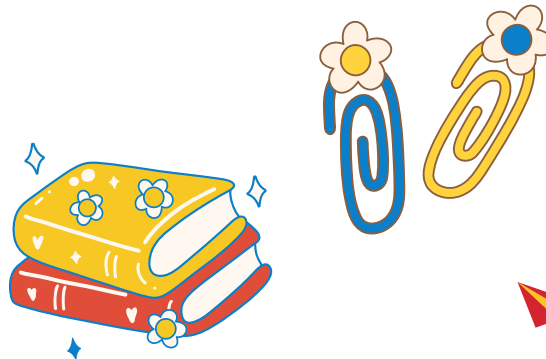
Our facility has many security features. There are cameras in each classroom, as well as in the hallways. Our parking lot is monitored and the doors to our preschool are locked after car line each day.



CURRICULUM

Our curriculum includes academic instruction, creative art, Bible time, music and free play. Teachers create an experience for the children as Bible verses and stories come to life. We utilize the Abeka curriculum in all of our classes.

A curriculum fee is assessed for our K3, K4 and Kindergarten students.



WHAT WE DO

Our daily schedule involves a balance of play, group activities and classroom learning.

We get creative: Activities are provided during learning centers in our classrooms.

We learn: Stories, games, finger plays and activities are included in our circle time.

We play: We are supervised while playing games and enjoying being active.

We eat: Bring your lunch!

